

REDMAN CASEY ESTATE AGENTS

179 Ivy Road, Bolton, BL1 6EE

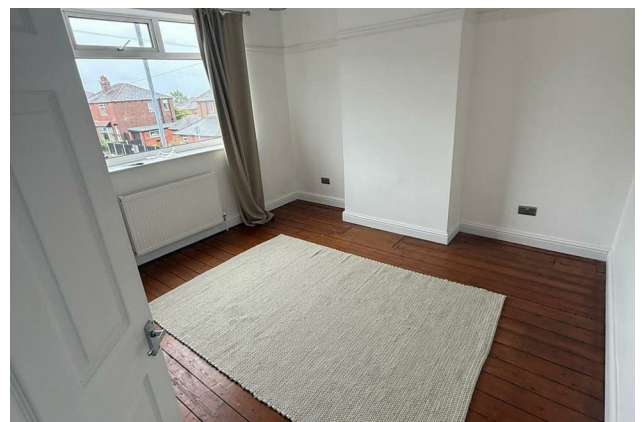
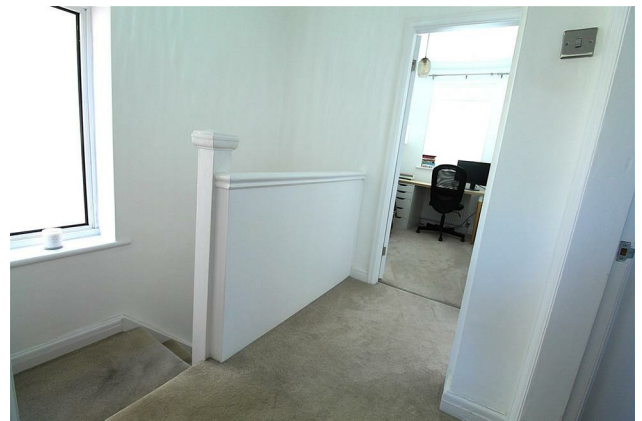



£1,250 Per Calendar Month

69 Winter Hey Lane Horwich Bolton Greater Manchester BL6 7NT
Tel: 01204 329990 | Fax: | Email: sales@redmancasey.co.uk
www.redmancasey.co.uk







Energy Efficiency Rating		
	Current	Potential
<i>Very energy efficient - lower running costs</i>		
(92 plus) A		
(81-91) B		
(69-80) C		
(55-68) D		
(39-54) E		
(21-38) F		
(1-20) G		
<i>Not energy efficient - higher running costs</i>		
England & Wales	EU Directive 2002/91/EC	

Environmental Impact (CO ₂) Rating		
	Current	Potential
<i>Very environmentally friendly - lower CO2 emissions</i>		
(92 plus) A		
(81-91) B		
(69-80) C		
(55-68) D		
(39-54) E		
(21-38) F		
(1-20) G		
<i>Not environmentally friendly - higher CO2 emissions</i>		
England & Wales	EU Directive 2002/91/EC	